

The Franz Franzovich Hubert Family
Starting Again in Canada
Der Anfang in Kanada

Compiled by Henry Arthur Hubert
Vineland, Ontario

2015

Southern Alberta at the Time of the Arrival of the Hubert Family

Late 1920s and early 1930s



Funeral of Helena (Hübert) Giesbrecht – 1924



Back: **Jacob, Heinrich, Johann, Tina, Peter, Liese**

Front: **Susie, Mieke, David, Henry Giesbrecht**

Susan & Helen, Helena's daughters in front.

The Country of Canada

Das Land Kanada

In the 1920s

Traditional Indian Living



Houses like this are used today only for exhibitions.

<http://apachetracker.blogspot.ca/2009/10/american-indian-teepee.html>

American Bison



These animals were used by Indians on the plains for nearly all their needs: leather, meat, tools etc.

Eskimo Snow House—Igloo



Not all Canadians live in houses like this!! They are built in an emergency. Sometimes they are used during a hunt lasting several days.



Northern Canadians in dress-up furs.

Northern Lights over Yellowknife Nordlichter



Many people come from east Asia to see these lights in the sky.
They come to Yellowknife in winter and sit in the cold to see them.

Flora and Fauna

- The animals that existed in Canada in the 1920s are the same species that exist today.
- There are unfortunately only fewer of them today

Polar Bears - (Eisbär)



Innocent looking but very dangerous.

Musk Oxen in the Arctic



Northern Caribou Herd



https://www.google.ca/search?q=photo+northern+caribou+herd&espv=2&biw=1332&bih=825&tbm=isch&imgil=_nl7ween6S2KMM%253A%253B316no9snfFzehM%253Bhttp%25253A%25252F%25252Fwww.cbc.ca%25252Fsevenwonders%25252Fwonder_porcupine_caribou_herd.html&source=iu&pf=m&fir=_nl7ween6S2KMM%253A%25252F%25252Fwww.canada-travel.ca%25252Fmedia%25252Fmembers%25252Fmember_1618_4.jpg%253Bhttp%253A%25252F%25252Fwww.canada-travel.ca%25252Fnewfoundland-and-labrador%25252Fgreat-canadian-wildlife-adventures_1618%253B500%253B332

Timber Wolf



https://www.google.ca/search?q=photo+timber+wolf&espv=2&biw=1332&bih=825&tbm=isch&imgil=I9JjmlZ91AUjMM%253A%253BqBaTswFLzXZ5M%253Bhttp%25253A%25252F%25252Fverpoim.blogspot.com%25252F2011%25252F08%25252Ftimber-wolf.html&source=iu&pf=m&fir=I9JjmlZ91AUjMM%253A%25252F25252FqBaTswFLzXZ5M%25252C_&usg=__6ZPb46AHUljspucj8tSo11WOOss%3D&dpr=0.75&ved=0CCgQyjdqFQoTCMfzg6ugjcYCFQhDkgod7RUAAg&ei=F3B8VYeMGliGyQTtq4AQ#imgrc=snVR3xdg4kQXjM%253A%3ByTv_rzldQvRHfM%3Bhttp%253A%252F%252Fi691.photobucket.com%252Falbums%252Fv280%252FArticHowl%252FTimber_wolf_by_shadowspirit07.jpg%3Bhttp%253A%252F%252Fwww.animationsource.org%252Fboard%252Fwolf-mountains-accepting-t35415.html%3B600%3B479

A Grizzly Bear Fishing



Canadian Moose



Mountain Sheep



Mountain Goat (Bergziege)



https://www.google.ca/search?q=photo+timber+wolf&espv=2&biw=1332&bih=825&tbn=isch&imgil=i9JjmlZ91AUjMM%253A%253BqBaTswFLzXZ5M%253Bhttp%25253A%25252F%25252F%25252F2011%25252F08%25252Ftimber-wolf.html&source=iu&pf=m&fir=i9JjmlZ91AUjMM%253A%252CqBaTswFLzXZ5M%252C_&usg=__6ZPb46AHULjspucJ8tSo11WOOSs%3D&dpr=0.75&ved=0CCgQyjdqFQoTCMfzg6ugjcYCFQhDkgod7RUAAg&ei=F3B8VYeMGliGyQTtq4AQ#imgsrc=snVR3xdg4kQXjM%253A%3ByTv_rzldQvRHfM%3Bhttp%253A%252F%252Fi691.photobucket.com%252Falbums%252Fv280%252FarticHowl%252FTimber_wolf_by_shadowspirit07.jpg%3Bhttp%253A%252F%252Fwww.animationsource.org%252Fboard%252Fwolf-mountains-accepting-t35415.html%3B600%3B479

Mountain Goat



Canadian Government (Regierung) in 1920s

- King and Parliament
- Part of the British Commonwealth
- Canada has 10 Provinces



King George V

King of Great Britain
and Canada
1910 to 1936

Canada's legal Flag until 1965



Parliament of Canada, Ottawa, Ontario





Mackenzie King

Liberal Party Leader
& Prime Minister

1921-26

1926-30

1935-48

Alberta joined Canada in 1905



Calgary Stampede

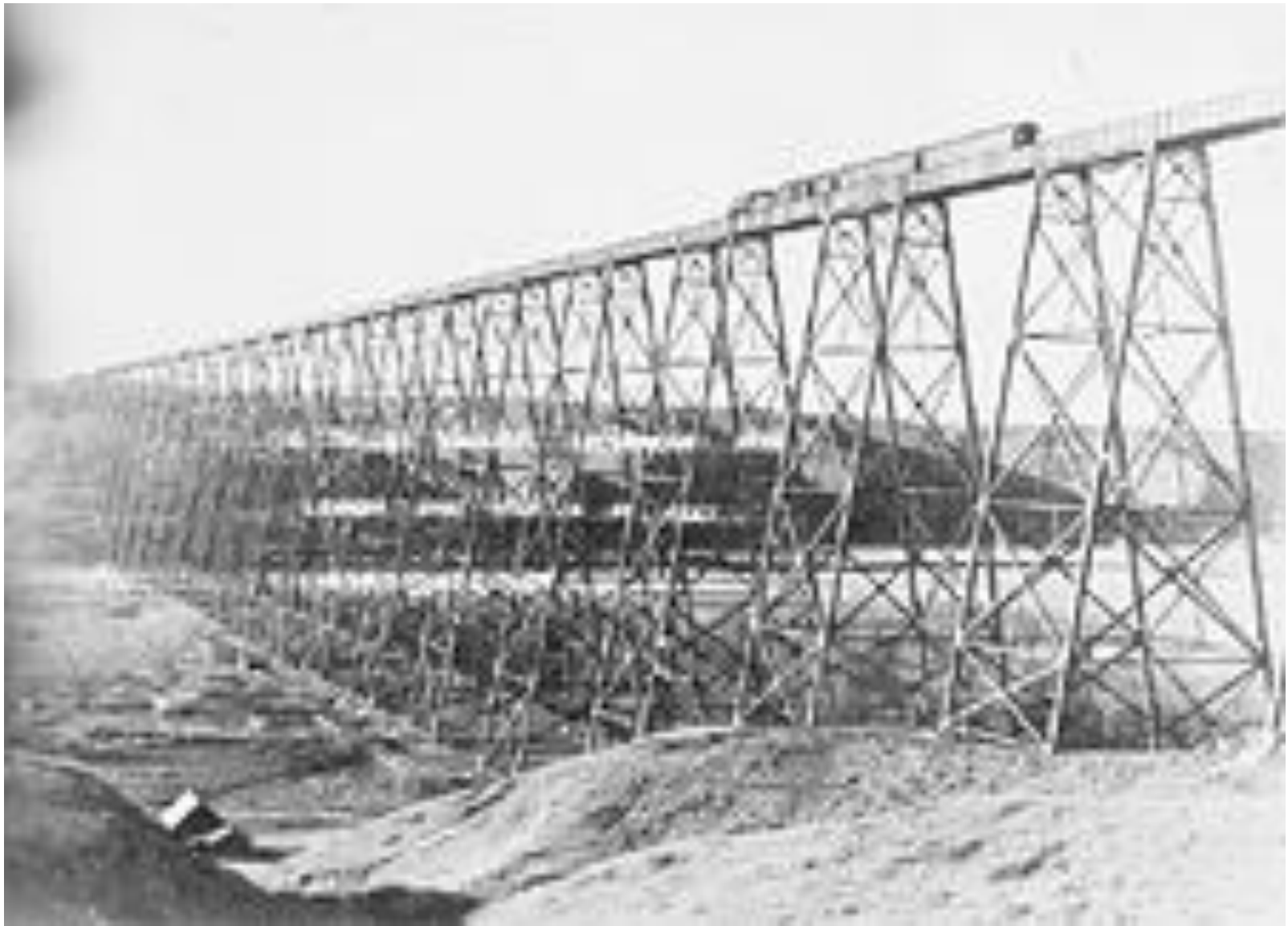
“The Greatest Outdoor Show on Earth”



City of Lethbridge, Alberta

The City Near the
Hubert Immigrants

Rail Bridge completed in 1909





Lethbridge
Railroad Bridge,
Eisenbahnbrücke

over Oldman River

1624 m long

96 m high

Galt Hospital (1910-55)



https://www.google.ca/search?q=photo+timber+wolf&espv=2&biw=1332&bih=825&tbm=isch&imgil=I9JjmLZ91AUjMM%253A%253BqBaTswFLzXZ5M%253Bhttp%25253A%25252F%25252Fverpoim.blogspot.com%25252F2011%25252F08%25252Ftimber-wolf.html&source=iu&pf=m&fir=I9JjmLZ91AUjMM%253A%252CqBaTswFLzXZ5M%252C_&usg=_6ZPb46AHULjSpucJ8tSo11WOOSs%3D&dpr=0.75&ved=0CCgQyjdqFQoTCMfzg6ugjcYCFQhDkgod7RUAAG&ei=F3B8VYeMGliGyQTtq4AQ#imgrc=snVR3xdg4kQXjM%253A%3ByTv_rzldQvRRHfM%3Bhttp%253A%252F%252Fi691.photobucket.com%252Falbums%252Fv280%252FarticHowl%252FTimber_wolf_by_shadowspirit07.jpg%3Bhttp%253A%252F%252Fwww.animationsource.org%252Fboard%252Fwolf-mountains-accepting-t35415.html%3B600%3B479

Lethbridge 1911



Lethbridge 1931

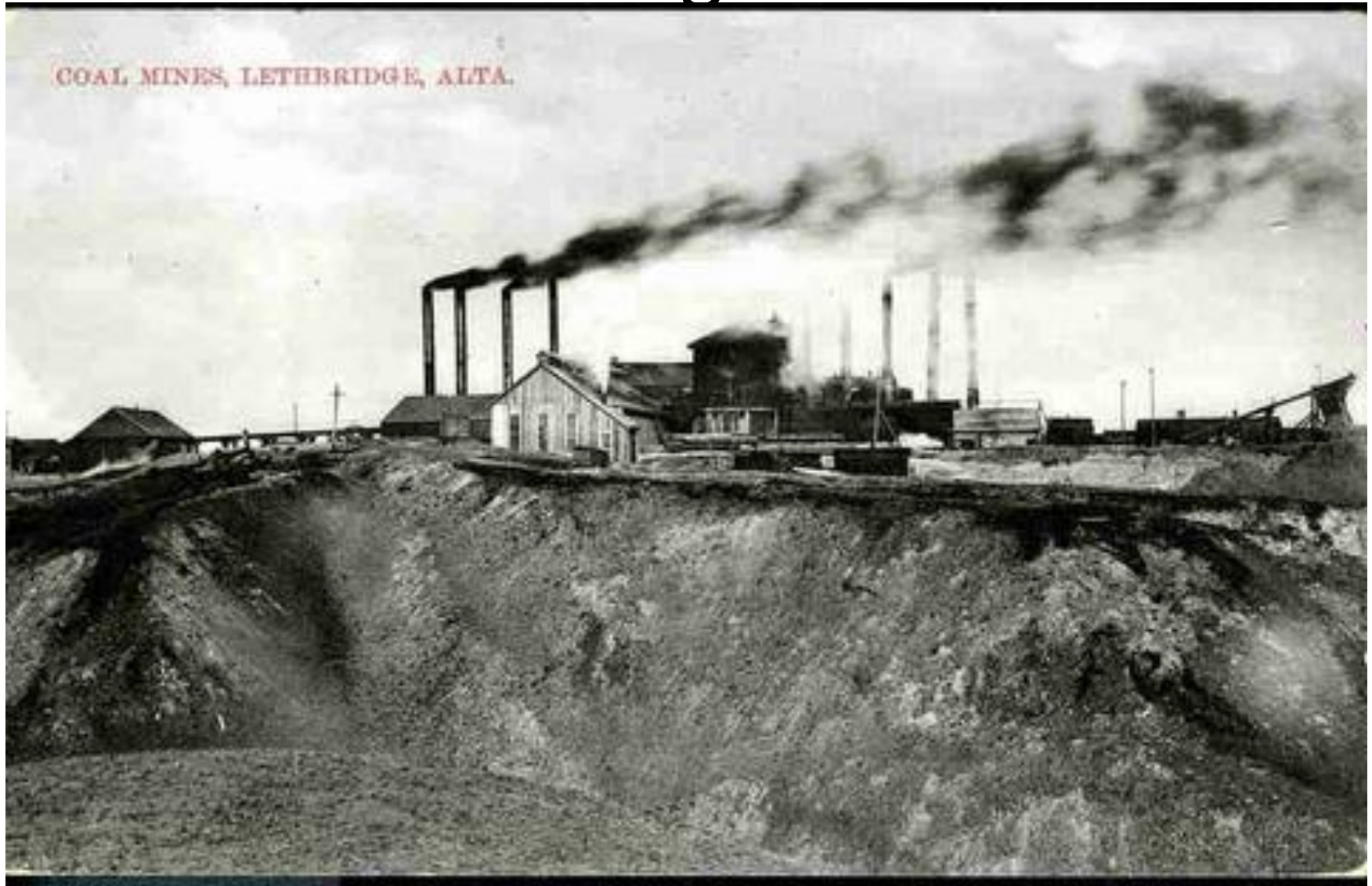


Fifth Street South, Lethbridge, in 1931.

Galbraith School, Lethbridge, 1920s



Coal Mining in Alberta



Post Office Building completed 1913



Machines Pushing Snow from Roads



Clearing Snow from Roads



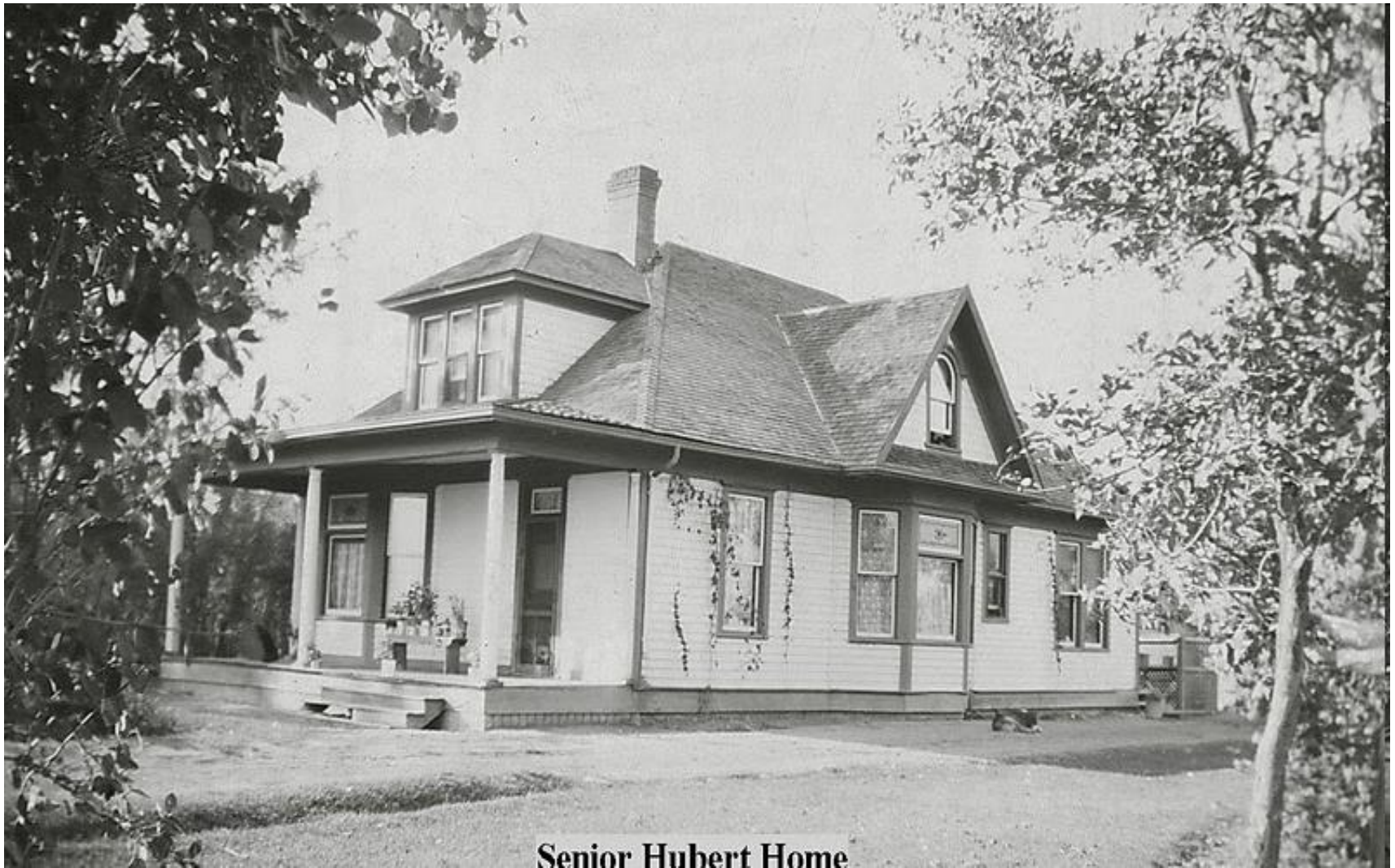
Entering Coaldale, Alberta



Franz F. Hubert Family (1937)



Hubert Home in Coaldale



Senior Hubert Home

The Hubert home is still inhabited (2015). The barn in the background of the next photo is part of the same farmyard. The barn has since been torn down.

Mary and Elizabeth (Mieche and Liese) on the steps of the old house



Cleaning fish on the Farm in Coaldale



Center: Franz F. Hubert; far right: his wife Helena Barg Hubert

Hubert's Barn in Old Age



2015 The Old House Refurbished



Jacob F. and Agnes Family, 1954



1954

Farm Home of Jacob F. And Agnes 1947-1970



Henry F. and Nelly Hubert, 1952



The Farm Home of Henry F. And Nelly 1949-1971



Farmer, Peter F. Hubert with Liese, Franz F. and Mieke



- L to R
Elizabeth Hubert
Franz F. Hubert
Mary Hubert
Peter F. Hubert

Retirement Home of Franz Franzovich, with Mary, Elizabeth and Peter

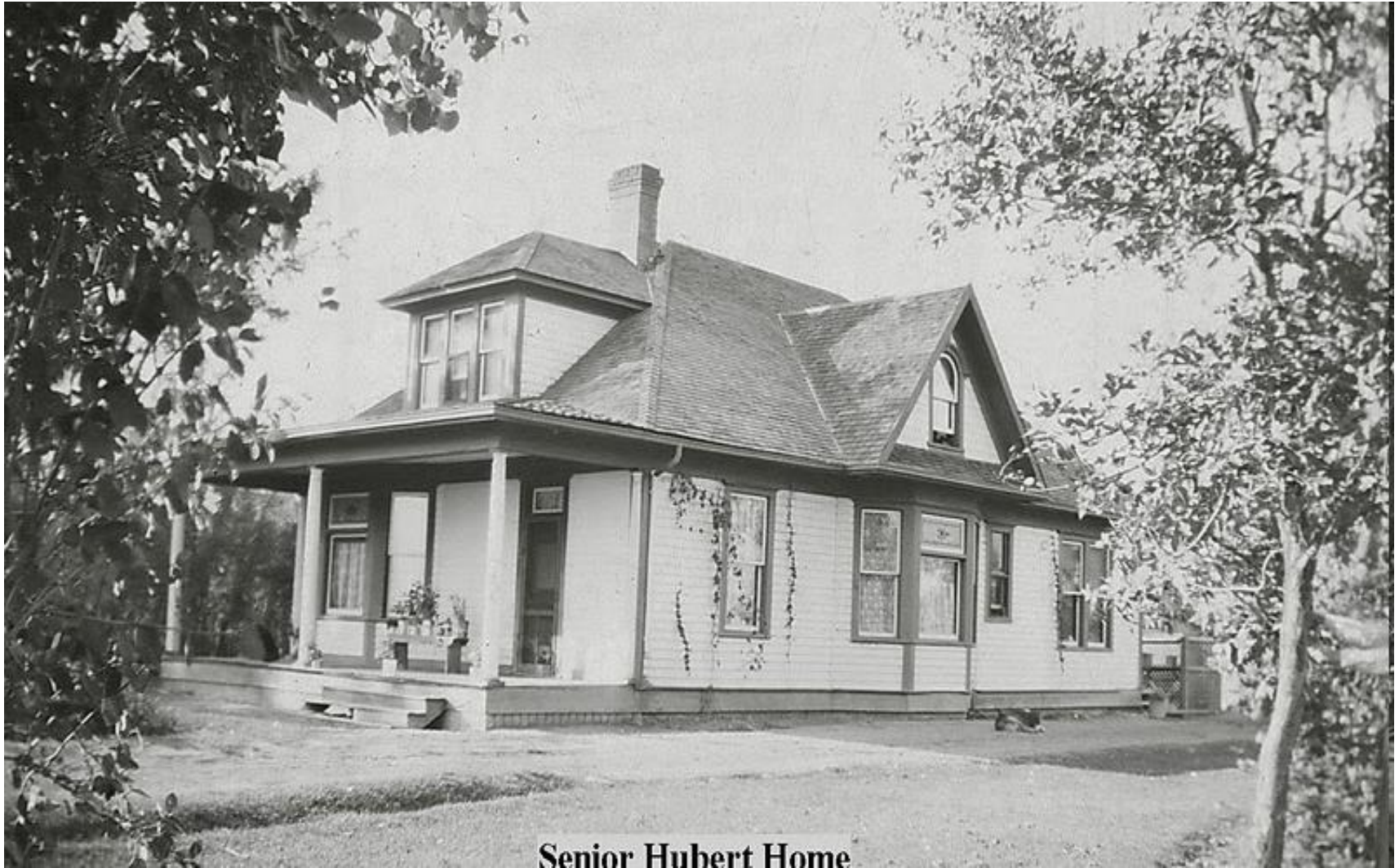


Farmer David F, Mary & Family



1970

Farm Home of David F. and Mary



Senior Hubert Home

Home: David F, now John Allen



Winter Sports in Coaldale



Hubert Families that Moved from Alberta to British Columbia

- Henry Giesbrecht Family
- Tina Hubert and John Kroeker Family
- Susanna Hubert and Jake Martens Family

Henry Giesbrecht with third wife and family



**Back: Ben, Henry, Pete & Helen Klassen, Sue, Mary, Walter, Peter, Ed, Jake
Front: Frank & Martha with son Gordon, (boy) Walter Klassen, Agatha, (boy)
Herman Klassen, Henry, (boys) Bob & Rick on Kay's lap (Jake's wife).**

Katharina Hubert and John Kroeker



Tina and John were
married in 1933
in Coaldale
but lived
in British Columbia

Susanna Hubert & Jacob Martens



They were married
in Coaldale in 1936
but lived many years
in northern BC

Items in the Home in 1920s

- No phone
- No television
- Not even radio
- No indoor plumbing except maybe a pump
- Coal stove for cooking and heating
- Coal oil lamps
- Ice box for cooling

Wagon with Coal



Coal Delivery “to your door”



Coal Oil Lamps



Hurricane lamps burn coal oil



Water Pump in the Kitchen



Cutting Blocks of Ice for an Ice House



Cutting Ice with Metal Saws



Cutting Ice for the “Ice House”



Ice House in Winter for Ice Cream in Summer



Grain Growing

1920s and today

Planting Grain with Horses



https://www.google.ca/search?q=photo+seeding+grain+with+horses&espv=2&biw=1332&bih=825&tbm=isch&imgil=SEYELHWn36LnbM%253A%253BXVLB_RrFkvEvmM%253Bhttp%252F%253A%252F%252Fwww.westerncanadianheritagemuseum.com%252Fseeding-grain-with-a-drill&source=iu&pf=m&fir=SEYELHWn36LnbM%253A%252CXVLB_RrFkvEvmM%252C_&usg=__wccqfJUMlxg95Sr6uG0-qQEQFyCc%3D&dpr=0.75&ved=0CCYQyjc&ei=ZOtyVYG8K9KXyASc7IH0DQ#imgrc=ioE6xryVEE0dnM%253A%3BVIznXolsozUTwM%3Bhttp%253A%252F%252Fupload.wikimedia.org%252Fwikipedia%252Fcommons%252Fa%252Fa7%252FThreshing_Machine_In_Action.jpg%3Bhttp%253A%252F%252Fen.wikipedia.org%252Fwiki%252FThreshing_machine%3B4752%3B3168

Planting Grain Using a Tractor



Cutting and Binding Grain



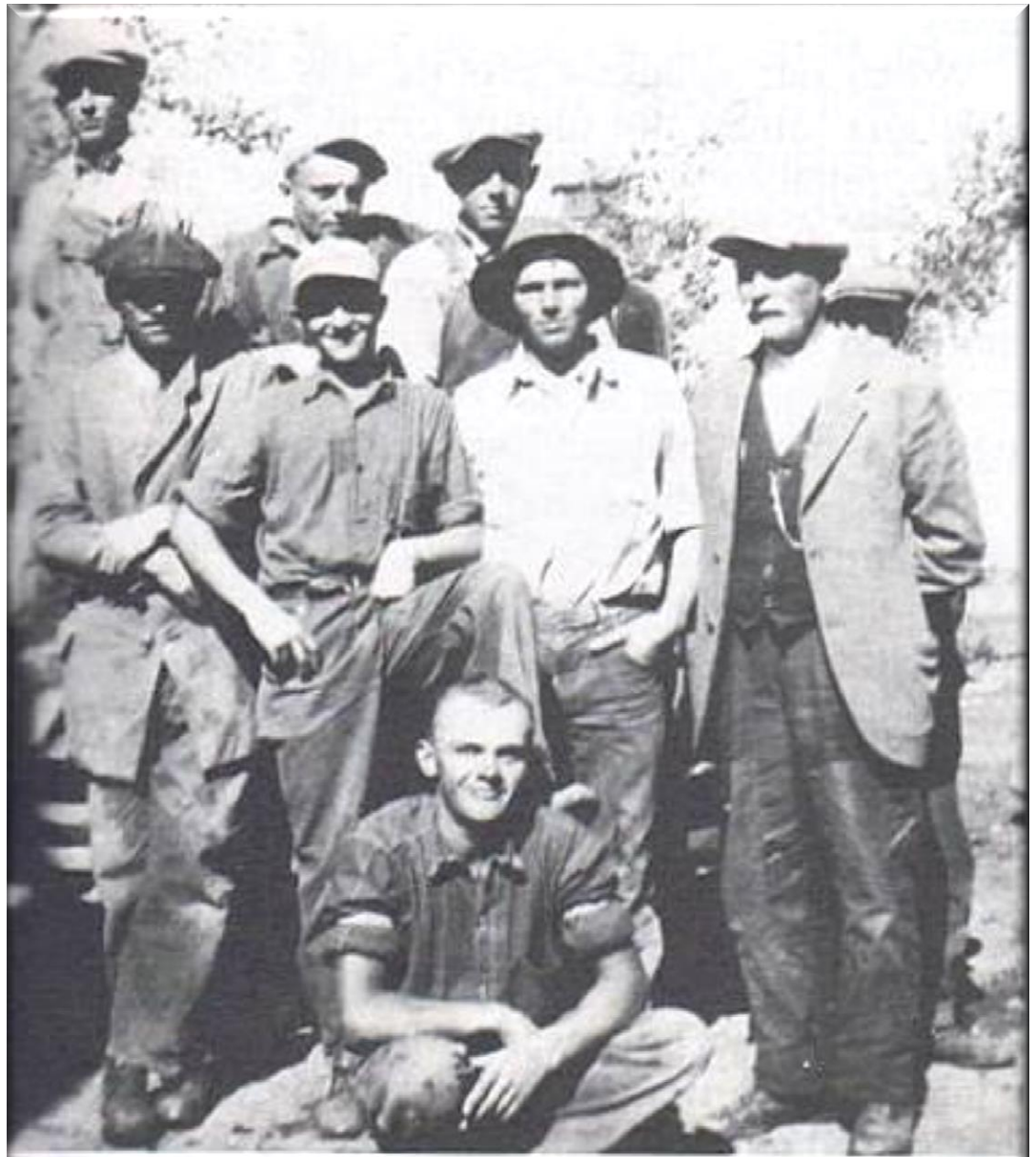
McCormick Deering Binder



Franz operated a custom threshing business



**A threshing crew
of Franz F Hubert**



Taken in the early 1930's. Henry Hubert, Redekopp, John and Pete Martens, Cornelius Voth, Reimer, Jake Martens, Jake Hubert and Mr. Hubert.



https://www.google.ca/search?q=photo+seeding+grain+with+horses&espv=2&biw=1332&bih=825&tbm=isch&imgil=SEYELHWn36LnbM%253A%253BXVLB_RrFkvEvmM%253Bhttp%25253A%252F%25252Fwww.westerncanadianheritagemuseum.com%25252Fseeding-grain-with-a-drill&source=iu&pf=m&fir=SEYELHWn36LnbM%253A%252CXVLB_RrFkvEvmM%252C_&usg=__wcqfJUMlxg95Sr6uG0-qQEYFc%3D&dpr=0.75&ved=0CCYQjyc&ei=ZOtyVYG8K9KXyAsc7IHodQ#imgrc=ioE6xryVEE0dnM%253A%3BVIZnXolsozUTwM%3Bhttp%253A%252F%252Fupload.wikimedia.org%252Fwikipedia%252Fcommons%252Fa%252Fa7%252FThreshing_Machine_In_Action.jpg%3Bhttp%253A%252F%252Fen.wikipedia.org%252Fwiki%252FThreshing_machine%3B4752%3B3168

Power Transmission by Flat Belt



Grains of Wheat

Weizenkörner



Large Gasoline Tractor of 1920s



<http://dsmdonaldson.tripod.com/id47.htm> This is a 40-72 cross motor Case tractor.

1938 Oliver Tractor



2015 Large Tractor for “Row-Crops”



2015 Large Row-Crop Tractor







All Purpose Farm Wagon for Horses



Large Grain Wagon





Hay wagon

Old Style Weizen Speicher



Grain storage
elevator
always beside
a railroad track

Grain Storage Buildings





Dairy Farmers Sold Milk to the Local
Cheese Factory
Käsefabrik

1920s to 1960s

1940 THE NEW COALDALE CHEESE FACTORY CO-OP LTD 1941



Pit Rogers, *Subsident*
 Frank Hubert, *President*
 Jakob Klassen, *Manager*

British Empire Dairy Show
 BELLEVILLE 1940
 Dominion of Canada Special
THIRD PRIZE
Wm. H. ...



Unity is Strength

FIRST PRIZE
 Canada Pacific Exhibition
 APR. 15 TO SEPT. 7 1940
 VANCOUVER, B. C.

FIRST PRIZE
 Canada Pacific Exhibition
 APR. 15 TO SEPT. 7 1940
 VANCOUVER, B. C.

CANADIAN EXHIBITION AND STAMPEDE
 1940

FIRST PRIZE
 Canada Pacific Exhibition
 APR. 15 TO SEPT. 7 1940
 VANCOUVER, B. C.

CALGARY EXHIBITION AND STAMPEDE
FIRST
 1941

EMERALD EXHIBITION
SECOND

FIRST PRIZE
 Canada Pacific Exhibition
 APR. 15 TO SEPT. 7 1941
 VANCOUVER, B. C.

ALBERTA EXHIBITION
FIRST

CALGARY EXHIBITION AND STAMPEDE
SECOND
 1941

EMERALD EXHIBITION
SECOND

The Local Church

Die Gemeinde

Offered:

Spiritual leadership

Social opportunities

Coaldale M B Church Building 1929-1939



129
First Coaldale M.B. Church, First Service Jan.25 1929
Construction Start Dec.1928, Thirty-two by Fifty-two Feet

Coaldale Church Congregation 1929



Coaldale Mennonite Brethren Church Congregation
1929

Coaldale Church, 1930s





Cemetery Organized in 1928.
Photos by Henry Arthur Hubert taken in summer of 2014.

Huberts in the Coaldale Cemetery

In the order of their internment (Friedhoff)

Johann F. 1907-1930

Erna Nelly 1938-1939

Helena (Barg) 1874-1948

Jacob B. 1936-1960

Franz Franz 1875-1964

Mary 1901-1971

Jacob F. 1904-1972

Peter F. 1909-1979

Amy 1980

Elizabeth 1903-1984

Henry F. 1905-1985

Nelly (Janzen) 1909-1987

David F. 1917-2003

Agnes (Janz) 1909-2012

Edward Bartel 1958-2013

IN COMMEMORATION OF
BENJAMIN B. AND
MARIA (ROGALSKY) JANZ.
THEIR PERSONAL COURAGE,
PERSISTENCE AND SACRIFICE,
BY GOD'S GRACE, ENABLED
OVER 20,000 MENNONITES
FROM RUSSIA TO ENTER
CANADA DURING THE 1920's.

*I WILL UTTER THINGS HIDDEN FROM OF OLD,
THINGS WE HAVE HEARD AND KNOWN,
THINGS OUR FATHERS HAVE TOLD US.
WE WILL NOT HIDE THEM FROM THEIR
CHILDREN; WE WILL TELL THE NEXT
GENERATION THE PRAISEWORTHY
DEEDS OF THE LORD.*

PSALM 78:2-4

ERECTED BY THE ANABAPTIST
FOUNDATION (CANADA). AUGUST 4, 2002



B. B. Janz

1877-1964

Coaldale M B Church, 1939-71



The Coaldale Church, (now a museum)

108 feet x 60 feet



Coaldale Church Choir & Orchestra Performing Handel's Messiah, 1955



Presented Handel's "Messiah" in the Coaldale Church;
Peter J. Dick conductor, Agnes Dick pianist

Coaldale Bible School and Church



Alberta Mennonite High School AMHS



Sugar Beet Industry in Southern Alberta

Zukerrüben

1920s and the Present

Sugar Beet (Zuckerrübe)



Hoeing Sugar Beets



Removing Weeds in Sugar Beet Fields



Sugar Beet

At harvest time



Sugar Beet Harvest Knife



2015 Cutting off the Leaves of Beets



Six rows at a time.

2015 Sugar Beet Harvest



2015, Harvesting Sugar Beets



Farm truck delivering Sugar Beets





Sugar Factory, Alberta (Zuckerfabrik)



Irrigation in Southern Alberta (Bewässerung)

To supplement the limited rainfall

Irrigating Sugar Beets



Irrigating in Alberta



“Flood Irrigating” grain or hay fields



2015 irrigation



Canals Bring Water from the Mountains (Wasser von den Bergen)



A River Dam to Collect Irrigation Water



Waterton Lakes National Park

Das Wasser kommt von den Bergen



END

БОЛЬШОЕ СПАСИБО

Vielen Dank !

Thank You !